

Now

Parkland

Information and stories for
Parkland employees
Oct. 28 – Nov. 3, 2024



**Sign up
for ICARE,
I Share
Holiday
Giving
Program by
Oct. 31**

P.2 Nominations for the
2025 DFW Great 100

P.3 Recognizing Parkland's
latest ICARE Award winners

P.4 Language Services
is here to assist

Sign up for ICARE, I Share Holiday Giving Program by Oct. 31

We're excited to once again offer our ICARE, I Share Holiday Giving Program to employees in need! This year's program has been updated in the following ways to ensure we can provide the best support to our peers in need.

- Applicants will provide a "wish list" of items to receive on their application and will then be matched with a gift donor.
- This direct matching process will replace the gift store approach used in previous years. With this approach in place, the number of applicants we can support will depend on the number of employees who volunteer to donate.
- Applicants will be required to take three financial literacy courses in Pathways by July 31, 2025 (Saving, Managing Credit Debt and Budgeting) to be eligible for next year's holiday giving program.
- ICARE, I Share recipients are limited to three years of participation.

How to apply

Applications are available through Thursday, Oct. 31* [in Service Now](#) and paper applications are also available in the Spiritual Care Office (NPH 01.510). Please note: new applications will not be accepted after Oct. 31.

Applicants will then receive gifts provided by their donor on Monday, Dec. 9, based on the wish list provided in their application. We will share more details on this process in future communications.

**The maximum number of children for gifts will be no more than six (6) dependents in the interest of ensuring that we can serve as many applicants as possible.*

How you can donate

Employees are eligible to sign up as a donor through Thursday, Oct. 31. Please [click here](#) to sign up to be an ICARE, I Share donor. These donors will be provided with a gift list based on recipients' applications on Monday, Nov. 18. The deadline to provide gifts to approved applicants will be Friday, Dec. 6.

This program embodies our ICARE values and what it means to be Parkland Proud. Share with your fellow Parkland employees in need during the holidays and consider being a donor today!

For any questions or more information on this year's ICARE, I Share Holiday Giving Program, please email ICAREIShare@phhs.org.

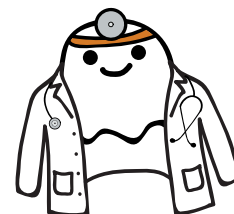


► Nominate a deserving nurse for the 2025 DFW Great 100

It's that time of the year to nominate an outstanding Parkland nurse for the 2025 DFW Great 100! Nominations are now open at www.dfwgreat100nurses.com/nominations and will be accepted until Sunday, Jan. 12, 2025. Winners will be announced in early February and celebrated at the Dallas Meyerson Symphony Center on Tuesday, May 13, 2025.

Rules for nominations:

- Nominees must be Registered Nurses who live in one of these counties: Collin, Dallas, Denton, Ellis, Erath, Hood, Hunt, Johnson, Kaufman, Parker, Rockwall, Somervell, Tarrant, Wise or Van Zandt.
- The nomination letter should not include any patient names, the nominee's name or specific identifications about the Registered Nurse (e.g., place of employment). This is to help aid in the blind judging process. Letters submitted that include nominee's name or other forms of identification will be disqualified without notice.
- The letter of recommendation MUST address each of the following categories: role model, leadership qualities, service to the community, compassionate caregiver and significant contributions.
- Past Great 100 recipients are not eligible to be re-nominated. A complete listing of past years' Great 100 Nurses is available at www.dfwgreat100nurses.com/past-great-100-nurses.



THE GREAT 100 NURSES
Dallas • Fort Worth

Sample past winning Great 100 letters are also available on the Great 100 website at www.dfwgreat100nurses.com/nominations. If you have any issues with submissions please email info@dfwgreat100nurses.com If you need assistance writing/editing your nomination please Parkland.Nurses@phhs.org and a member of the PCAPP team will be happy to assist you.

'Fall back' boxes to be distributed to night shift staff Nov. 3

Daylight Saving Time ends at 2 a.m. on Sunday, Nov. 3. For many of us, this means an extra hour of sleep, but for staff working during that night shift, it means they have to WORK an extra hour when the clocks fall back. In an effort to bring some extra cheer to our staff during this time, Nursing has collaborated with Employee Engagement to put together boxes of snacks and treats for those teams who will be working the night of Saturday, Nov. 2.

▼ Lasting Impressions: Martyn Smith

Each week, "Lasting Impressions" features a Parkland employee who does exceptional work and provides excellent customer service. This week's "Lasting Impressions" features Martyn Smith, Laboratory Inventory Coordinator, Administration Pathology.



"Marty consistently goes above and beyond in his role, demonstrating a remarkable commitment to excellence for both internal and external customers and our patient needs. He not only exceeds expectations, but he takes initiative and shows great leadership. His positive attitude and willingness to assist others makes it easy to reach out for his expert advice in times of need. He was a great support while I was part Pathology and is always willing to assist me now that I have transitioned to another area of Parkland. I believe Marty truly deserves recognition for his hard work and dedication."



Want to nominate an employee who goes above and beyond? Tell us what makes them so fantastic by emailing Employees@phhs.org or calling ext. 28048.

▼ Recognizing Parkland's latest ICARE Award winners

Congratulations to Parkland's third quarter ICARE Award recipients! These exemplary employees, listed below, were recently honored for setting an outstanding example of living our ICARE values through their words and actions.

- **Integrity** – Elizabeth Childs, Program Manager, Correctional Health
- **Compassion** – Vikki Williams, Administrative Assistant, Call Center Operations
- **Collaboration** – Lydia Samuel, Registered Nurse Specialist – ICU/CCU/PCU, Neurosciences ICU
- **Accountability** – N/A
- **Respect** – Rebeca Martinez, Radiology Aide, Radiology Mammography
- **Equity** – Pie-Ling Hardin, Adv Practice Provider III – ACLS

If you see an individual with an ICARE-branded badge reel or polo, you'll know they go above and beyond to embody our ICARE values!

Our ICARE Awards are presented quarterly. Be sure to visit our [Recognition Platform](#) and nominate a fellow team member for our next ICARE Awards today!



Elizabeth Childs



Vikki Williams



Lydia Samuel



Rebeca Martinez



Pie-Ling Hardin

Schedule an appointment with OnSight Eyes

As part of our ongoing commitment to the well-being of our employees, we're pleased to offer OnSight Eyes at the Parkland campus Tuesday, Nov. 12, through Thursday, Nov. 14. This provides employees currently enrolled in Parkland's vision plan a convenient opportunity to receive vision care at Parkland.

Services provided include:

- Eye exam (covered by Parkland's vision plan)
- Selection of glasses and eyewear for employees – covered by Parkland's vision plan and available to employees with a valid, outside prescription
- Contact lens exams for existing wearers only

OnSight Eyes will offer these services next to the Employee Health Center in the Moody Outpatient Center 4th Floor Conference Room (MOC 04-1100) Nov. 12-14. Vision plan copays will apply, and appointments are required.

To schedule an appointment, [click here](#).

For more information on this exciting new opportunity, view [this flyer](#) or visit ParklandBenefits.org.





▶ Language Services is here to assist

Parkland's Language Services department offers Spanish-language services to Parkland clinicians including in-person interpreting, video and phone interpretation and translations. Interpreters are available not only for medical appointments, but other services provided as well. Types of encounters may include financial counseling, registration, research studies and patient education. Interpreters are available 24/7 in-person, by video and over the phone.

To reach a medical interpreter:

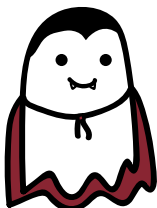
- Over the phone and video interpretation: 214-590-5846 (ext. 25846)
- In-person interpretations at main campus 469-419-0823 (ext. 70823)
- You can also submit Spanish and American Sign Language interpreter requests in Epic:
 - Go to Manage Orders
 - Type "Spanish" or "American Sign Language" in the search box
 - Select the correct order from the drop-down menu
- Enter the following information in the "comments" section:
 - ◆ Callback number
 - ◆ Location (floor and room number)
 - ◆ Request by (name of person requesting the service)
 - ◆ Reason for request (admission, discharge, consent, etc.)
- Sign and accept the order to complete the process
- For translations, please email: LanguageServices@phhs.org

▶ Holiday decoration guidelines

As we enter the holiday season, you may want to spruce up your work area in a festive way. But it's important that whatever decorations you put up comply with [Life Safety Policy LS 01-03: Holiday & Special Occasion Decorations](#). A few basic guidelines are below, but please refer to the policy before doing any holiday decorating.

Infection Prevention

In an effort to ensure the highest level of regulatory compliance and patient safety, any holiday decorations as allowed under [Life Safety Policy LS 01-03](#) must be limited to off-stage, non-patient care areas only. Decorations that meet the material standard must be cleanable with hospital-approved disinfectant wipes and should not impede proper cleaning of other environmental surfaces.



Fire Safety

Decorations may not block or restrict access to any fire or life safety equipment. This includes but is not limited to the obstruction of fire sprinkler heads, exit signs, fire extinguishers, fire alarm devices, medical gas isolation valves or electrical panels.

Decorations of any kind may not be suspended from ceilings or attached to fire or smoke compartment doors or obstruct the function of any door or latch.

Onward & Upward

Clinical Education & Academic Partnersh: Pinglee Rodriguez to Registered Nurse Professional Development Practitioner; Chaitanya Epa to Safe Patient Handling Program

Clinical Nutrition Enteral Nutrition Centers: Antria Williams to Formula Technician

Corporate Communications: Elizabeth Ramirez to Digital Communications Specialist

Infusion Therapy: Maria Avila to Medical Practice Assistant

Irving Health Center: Anali Palomares Garcia to Medical Practice Assistant

Irving Women's Health Center: Laura Martinez Romero to Unit Technician

Medical Staff Professional Services & Regulatory Affairs: Stephanie Pierce to Manager, Medical Staff Professional Services

Operations Administration: Elva Medina to Senior Executive Assistant

Patient Financial Services – Patient Access Management: Jessica Lewis and Veronica Munoz to Senior Financial Counselor

Retirements

- Virginia Bureson, Senior Registered Nurse Specialist – NICU, Neonatal Nursery-ICU
- Ann Christian-Dold, Diabetes Care & Education Specialist, Global Diabetes Program
- Dawn Lewellen, Nurse Anesthetist CRNA, Anesthesiology
- Daizy Mathai, Lactation Consultant, Women and Family Education
- Craig McCallum, Staff Accountant, Accounting/Finance
- David Olmstead, Talent Management Business Partner – PRN, Talent Management Consulting
- Patricia Rios, Financial Counselor, PFS Patient Access Management



Parkland

Care. Compassion. Community.

Parkland Now is published by the Corporate Communications department at Parkland Health.

Please note the submission deadline for each issue of Parkland Now is by the end of day each Monday.

To publicize your news in Parkland Now, please send all submissions to Employees@phhs.org or call ext. 28048.